

**WHITTAKER MOSS PRIMARY
SCHOOL**



**Elmsfield Avenue
Norden
Rochdale
OL11 5UY**

Telephone: (01706) 342342

Facsimile: (01706) 342342

e-mail:

office@whittakermoss.rochdale.sch.uk

Website:

www.whittakermoss.rochdale.sch.uk

**Headteacher: Mrs J Williamson
B.Ed, N.P.Q.H.**

**Chairman of Governors:
Mr Gordon Main**

STATEMENT ON THE ETHOS AND VALUES OF THE SCHOOL



Statement of Aims

To be an inclusive school, which welcomes all children from its community and provides challenging educational experiences for each individual.

To provide an interesting and stimulating environment, which reflects the cultural diversity of the school and its community.

To help each individual to strive to reach his/her full academic potential through the provision of a motivating and relevant curriculum which concentrates on providing children with good literacy and numeracy skills whilst ensuring enriching learning experiences.

To provide a welcoming atmosphere based on positive relationships, where everyone is valued and any discrimination is always challenged.

To promote a culture of life-long learning which promotes education beyond the confines of the classroom and engages parents in the learning process, as individuals and in support of their children.

To be a healthy school by teaching children how to have a healthy lifestyle, both physically and emotionally, producing healthy adults of the future.

To provide a safe environment in which to learn. To teach children how to stay safe and how to make wise choices for their future life.

To create an environment where children can attend, enjoy and follow a personalised route to success.

To create an ethos where positive behaviour is encouraged and self confidence can flourish, in order to deal with life's changes and challenges.

To develop attitudes where ambitions are strived for and children are aware of pathways to qualifications, or skills, to make them real.

Mission Statement



At Whittaker Moss, education is about learners experiencing the joy of discovery, solving problems, being creative in every area of the curriculum; developing confidence as learners and maturing physically, socially and emotionally.

This school will combine high standards with a varied, exciting curriculum.

Education will be the fusion of excellence and enjoyment. Learners do better when they are excited and engaged and when there is joy in what they are doing. Then they learn to love learning.

Literacy, mathematics and ICT will be the backbone of our children's success in learning. We will build on our strengths to serve the needs of our children using the skills of everyone in the school.

This school will drive its own improvement, set its own challenging targets and recognise that for the sake of our children, we can always do better.

Everyone at Whittaker Moss will have high expectations and set high standards for themselves and others. All will be treated fairly and listened to. All will have the opportunity to take responsibility, build their self esteem and develop their self confidence.

We will build a partnership with parents by giving good information and seeing them as partners in the education process.

We will provide activities outside school hours to extend and enrich learning.

The headteacher will put into place effective systems for quality assurance self evaluation that in school will promote high standards of behaviour by teaching positive behaviour to all learners. We are a Rights Respecting school who believe that all children have rights, but alongside those are responsibilities.

This will be a welcoming, friendly, bright and lively, happy place where children feel secure, where good behaviour is expected and where children positively enjoy growing up.

Value Statement



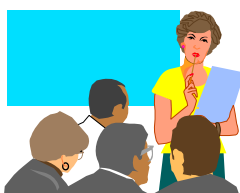
The ethos of our school is based on care, consideration and respect for other people – their feelings, their property and their general well being.

Parents

Whittaker Moss Primary School actively encourages and highly values the part played by parents in the life of the school, as partners in the process of educating children, as members of the very successful PTA or as volunteers who come on a regular basis to work throughout the school.



Parent Teacher Association



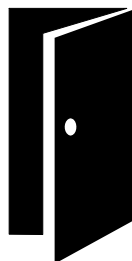
We have a thriving PTA consisting of Parents, Teachers and Friends of the School.

There are two main aims: The promotion of a better understanding between the home and school, and the organisation of events to raise money which will ultimately benefit the children.

The range and quality of organised social functions provided by the PTA is truly exceptional.

We hope you will be able to visit the school so that you can have the opportunity to see us at work.

Visiting Arrangements



We operate an 'open-door' policy at Whittaker Moss and would always have a member of staff on hand to deal with any quick enquiry.

If you would like to be shown around or discuss any aspect of our school in more detail please don't hesitate to contact the Headteacher for an appointment.

SCHOOL INFORMATION

Whittaker Moss Primary School opened in 1982, it is a single storey, open-plan Primary School (built in 1970) situated above the village of Norden near Rochdale.

We are a one-form entry school with 299 children on roll (September 2010), aged 3 to 11 years, of which 52 are part-time children aged 3+ in our nursery class.

We aim to provide a stimulating and caring environment where children feel both secure and happy whilst they learn. We feel the open plan design of our building greatly helps in achieving this.

There are eight classes in school. These are arranged as mainly 'single age', though some mixed grouping has been introduced in Key Stage One, creating much smaller than average classes.

We also have a nursery class, which caters for 52 children part-time. The nursery class is part of our school and enjoys full use of school facilities. In addition, it has an impressive outdoor play area.

All classes have access to large, bright activity areas, well stocked library, quiet carpeted areas and a spacious, well designed playground and playing field with outdoor challenge area.

The school benefits from wireless ICT infrastructure and each class has an interactive whiteboard enabling teachers to make use of the very latest software and the internet in their curriculum delivery. Staff and children can put information and work on the Learning Platform, a Virtual Learning Environment which parents can share at home. (password protected)

Throughout the school, children work in an informal but structured environment and teaching is provided on a class, small group or individual basis depending on the needs of the child and the area of curriculum.

Whittaker Moss Primary School has a School Council of elected children, who meet regularly with staff to discuss a range of issues and concerns.

We also have an 'Eco-Group' who meet to discuss ways for the school to be more 'eco-friendly'. We have recently achieved the Gold standard and received the 'Green Flag' to fly in our grounds.

The school has also been awarded the national 'Healthy Schools Award'.

Whittaker Moss Primary School welcomes children with special educational needs. They are integrated fully into mainstream classes and play a highly valued part in the life of the school.

CURRICULUM & ASSESSMENT



Whittaker Moss is a Lead Assessment School and children are taught the principles of Assessment for Learning. This entails sharing the Learning Intention with children and compiling success criteria together for the task to be carried out. All statutory assessments are carried out at the appointed times. In addition, we undertake regular “in house” assessments of our children in order to monitor their progress throughout the current year and across the whole school.

A full written report is produced each year on every child. Parents Evenings are held twice-yearly, normally in the Autumn and the Spring or early Summer terms.

Religious Education

The local authority agreed syllabus is followed in the teaching of RE. In consultation with the Headteacher, arrangements can be made for those children whose parents wish to withdraw them from assemblies or RE.

Sport Provision

A wide range of sporting activities are provided for children of all ages at Whittaker Moss School.

Our sporting provision is supplemented by the use of specialist outside providers.



Our main aims are that children should -

- a) Have experience of a wide range of different sports and sporting activities during their time at school.
- b) Develop an understanding of the importance of regular exercise for their health.
- c) Above all, gain enjoyment from participation in sport.

Out of School Activities

Regular walks around the locality, educational visits and trips to places of interest are planned for each class during a school year. Year 6 children have the opportunity to take part in a residential stay at an activity centre - very popular with children and parents! During the week there are after-school clubs held almost every morning and evening (Football, Netball, Athletics, ICT, Rounders, Handball, Choir, Drama, Art, Gymnastics, Golf and Dance club).

Using the expertise of Rochdale Music Service, lessons are available to children in KS2 in either Brass, Strings, Keyboard, Drums or Woodwind.

Complaints Procedure

Our policy for dealing with complaints is available to parents from the school office.

ADMISSIONS

Admissions Policy

Applications are welcomed from parents of children for admission to:-

Nursery class - in the September prior to the child attaining 4 years of age
School - in the September prior to the child attaining 5 years of age.

Nursery Class

Allocation of places for the Nursery Class are determined by the Headteacher on the basis of:

1. Sibling priority, that is children who have an older brother or sister attending the school.
2. Proximity and ease of access to the school.

School

If the number of applications for a community school is greater than the number of places available (PAN), the school is oversubscribed. This means that the number of places has to be limited and the LA will use the following admission criteria when offering places.

Admission Criteria

- i) Children in care to the Local Education Authority (Looked After Children)

Priority can be claimed under this criteria if:

- A child is living in a residential home under the care of Rochdale MBC
- A child is living with foster parents in the Borough of Rochdale
- A child is living with his/her parents in the Borough of Rochdale and is subject to a care order.

- ii) Medical/Psychological

- If you consider that there are strong medical/psychological reasons for your child to attend a particular school you must attach a medical certificate/letter from your child's own doctor to the Common Application Form at the time of application.

On receipt of the medical certificate/letter, the case will be referred to either the Consultant Community Paediatrician or the Principal Educational Psychologist for their professional advice. This is

because evidence is required to show that admission to the particular school is essential.

Following receipt of the professional advice, a place will only be allocated under these criteria if there is firm evidence to show that the child's needs can only be met at the school to which the parent is applying.

You should note that providing evidence does not automatically mean that a place will be allocated under this criterion.

You should provide any appropriate evidence at the time of application. If medical grounds are claimed after the allocations procedure has been completed, it might not be possible to allocate a place using this priority.

iii) Sibling Priority

A sibling is either a brother or sister or a step-brother or step-sister living at the same address, but not a cousin or other relative.

You may claim this priority if your child has an older brother or sister who will be in attendance at the school in September 2010.

iv) Proximity and Ease of Access

Once places have been allocated using criteria i, ii and iii, any remaining places are allocated to pupils on the basis of their relative proximity and ease of access to the school but also to other schools nearby.

Proximity is not deemed to be a simple measurement of distance radiating out from the school either as the crow flies or as a walking route. It is moderated by the principle of ease of access, which takes account of relative distance to schools as a whole and means those living furthest from an alternative school will have priority.

Inevitably, a decision can come down to a distance of a few metres, but it is this kind of measurement, which is required to make an objective decision.

It should be noted that in looking at ease of access bus routes are not used. Nationally, walking distance for secondary aged pupils is deemed to be up to three miles, so there is an assumption that up to this distance the journey can be on foot. Walking routes are deemed to be along recognised lit, paved routes which, in general, are overlooked by houses and as such are likely to be relatively safe to walk. Unlit, unmade-up short cuts are not taken into account in calculating walking distances.

Walking distances are measured using SCANA, which is a computerised application that utilises Mapinfo Professional® to calculate walking distances based on Ordnance Survey Maps.

PRACTICAL DETAILS

NAME OF SCHOOL :	WHITTAKER MOSS PRIMARY SCHOOL
ADDRESS OF SCHOOL:	Elmsfield Avenue Norden Rochdale OL11 5UY
TELEPHONE:	(01706) 342342
FAX:	(01706) 342342
E-MAIL:	office@whittakermoss.rochdale.sch.uk
WEBSITE	www.whittakermoss.rochdale.sch.uk
HEADTEACHER:	Mrs J Williamson
CHAIRMAN OF GOVERNORS:	Mr Gordon Main

Whittaker Moss Primary School is a Co-educational Community Primary School.

Basic Characteristics of the School

Below is some information about Whittaker Moss Primary School compared with the national averages for primary schools –

- the school is bigger than other primary schools if the part-time nursery class numbers are taken into account but roughly the same if only main school numbers are considered (246 children compared with the average size nationally of 241).
- the percentage of children known to be eligible for free school meals (1.5%) is well below the national average.
- the percentage of children's mother tongue not / believed not to be English is 6.0%.
- the percentage of children identified as having special educational needs, including those with (0.4%) and those without (7%) statements, is below the national average.




Session Times



Morning - 9.00 am - 12.00 noon
Afternoon - 1.00 pm - 3.30 pm

School Year Calendar 2010/2011 (Children)

SCHOOL YEAR CALENDAR FOR MAINTAINED SCHOOLS – 2010/2011 – FINAL VERSION

TERM	TERM STARTS	HALF TERM BREAK	TERM ENDS	NUMBER OF DAYS ATTENDANCE
 AUTUMN	Monday 6 th September 2010	Monday 25 th October 2010 To Friday 29 th October 2010	Friday 17 th December 2010	70
<i>CHRISTMAS HOLIDAY – Monday 20th December 2010 - Monday 3rd January 2011 Inclusive and Tuesday 4th January*</i>				
 SPRING	Wednesday 5 th January 2011	Monday 21 st February 2011 To Friday 25 th February 2011	Thursday 14 th April 2011	67
EASTER HOLIDAY - Friday 15th April 2011 – Monday 2nd May 2011 Inclusive				
 SUMMER	Tuesday 3 rd May 2011	Monday 30 th May 2011 To Friday 3 rd June 2011	Wednesday 20 th July 2011	52

To allow schools to adapt to individual requirements they are able to **MOVE** up to **2 days** of the above days to allow for closure for religious festivals, in-service training or use as a polling station.

Community and Voluntary Controlled Schools wishing to amend the above term dates must identify the alternative days when school will be open to pupils and obtain the agreement of the LA to the proposed change

TOTAL 189 DAYS
*** = additional INSET day for 2010/11 only**
(Department for Education)